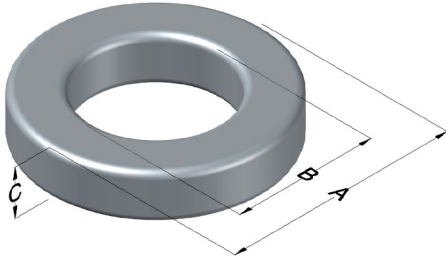




0077350A7

110 Delta Drive
 Pittsburgh, PA 15238
 NAFTA Sales: (1)800-245-3984
 HK Sales : (852)3102-9337
 magnetics@spang.com
 www.mag-inc.com



| Kool M μ Permeability (μ) | A _L (nH/T ²) | Core Marking | | | Coating Color |
|---|--|---------------|----------------|---------------------|------------------|
| | | Lot Number | Part Number | Inductance Grade | |
| 125 | 105 \pm 8% | XXXXXX | 77350A7 | N/A | Black |

| Dimensions | Uncoated | | Coated Limits | | Packaging |
|------------|----------|-------|---------------|-------|--|
| | (mm) | (in) | (mm) | (in) | |
| OD (A) | 23.6 | 0.928 | 24.4 | 0.958 | Cardboard cut-outs Box Qty= 480 pcs |
| ID (B) | 14.4 | 0.567 | 13.7 | 0.542 | |
| HT (C) | 8.89 | 0.350 | 9.66 | 0.380 | |

| Electrical Characteristics | | | Physical Characteristics | | | | | | |
|---|-------------------------|------|--|-------------------------------|---|---|---------------------------------------|---|---------------|
| Watt Loss @ 100 kHz, 100mT max(mW/cm ³) | DC Bias min (A-T/cm) | | Voltage Breakdown wire to wire min (V _{AC}) | Break Strength min (kg) | Window Area W _A (mm ²) | Cross Section A _e (mm ²) | Path Length L _e (mm) | Volume V _e (mm ³) | Weight (g) |
| | 1400 | 80% | | | | | | | |
| | 10.7 | 27.8 | | | | | | | |

| Winding Information | | | | Temperature Rating | |
|-------------------------|------|-------------------|------|--|-------|
| Winding Length Per Turn | | | | Wound Coil Dimensions (mm) | |
| Winding Factor | (mm) | Winding Factor | (mm) | Curie Temp: 500°C | |
| | | | | Coating Temp (Continuous up to): 200°C | |
| | | | | Notes: | |
| | | | | Maximum OD (70%) | 33.5 |
| | | | | Maximum HT (70%) | 21.4 |
| | | | | Surface Area (mm ²) | |
| | | | | Unwound Core | 1,790 |
| | | | | 40% Winding Factor | 2,630 |

