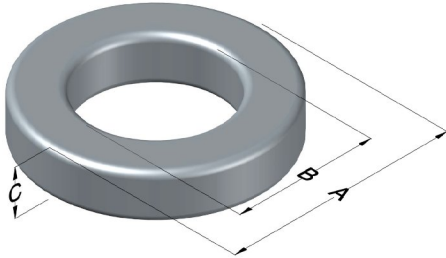




0077206A7

110 Delta Drive
 Pittsburgh, PA 15238
 NAFTA Sales: (1)800-245-3984
 HK Sales : (852)3102-9337
 magnetics@spang.com
 www.mag-inc.com



Kool M μ Permeability (μ)	A _L (nH/T ²)	Core Marking			Coating Color
		Lot Number	Part Number	Inductance Grade	
125	68 \pm 8%	XXXXXX	77206A7	N/A	Black

Dimensions	Uncoated		Coated Limits			Packaging
	(mm)	(in)	(mm)	(in)		
OD (A)	20.3	0.800	21.1	0.830	max	Bulk Pack 4 bags/box Box Qty= 1600 pcs
ID (B)	12.7	0.500	12.0	0.475	min	
HT (C)	6.35	0.250	7.12	0.280	max	

Electrical Characteristics			Physical Characteristics						
Watt Loss @ 100 kHz, 100mT max(mW/cm ³)	DC Bias min (A-T/cm)		Voltage Breakdown wire to wire min (V _{AC})	Break Strength min (kg)	Window Area W _A (mm ²)	Cross Section A _e (mm ²)	Path Length L _e (mm)	Volume V _e (mm ³)	Weight (g)
	80%	50%							
1400	10.7	27.8	1000	17	114	22.1	50.9	1,120	7.1

Winding Information				Temperature Rating	
Winding Length Per Turn				Wound Coil Dimensions (mm)	
Winding Factor	(mm)	Winding Factor	(mm)	Maximum OD (70%)	29.2
				Maximum HT (70%)	16.5
0%	23.3	40%	29.5	Surface Area (mm ²)	
20%	26.4	45%	30.5		
25%	27.2	50%	31.3	Unwound Core	
30%	27.8	60%	33.2		
35%	28.8	70%	35.4	40% Winding Factor	
Notes:					
Curie Temp: 500°C					
Coating Temp (Continuous up to): 200°C					

